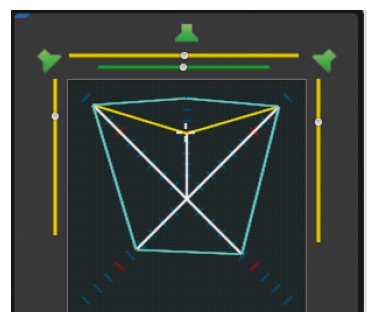
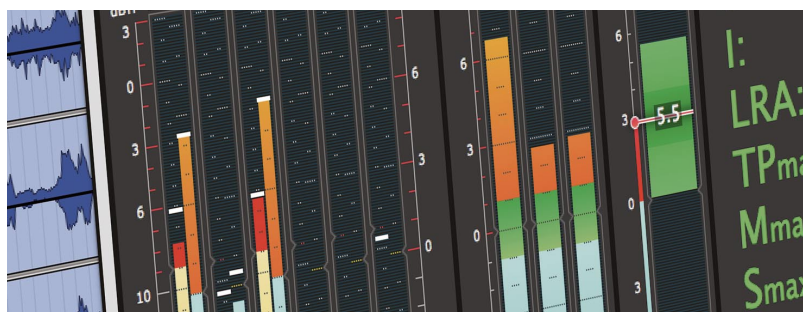


Product Information Software Segment



Software Segment

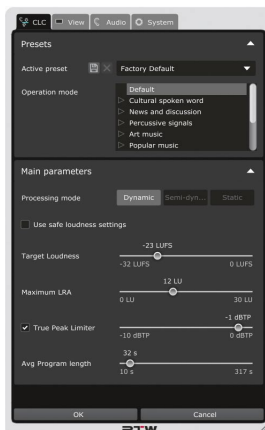


Intuitive, reliable, comfortable

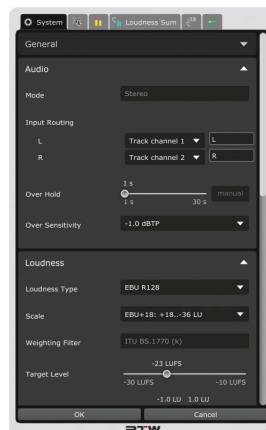
RTW Masterclass Plugins

The extensive performance and functionality of RTW's popular, high-quality audio metering and measurement devices can be expanded when interacting with RTW's PC software or directly be used as easy-to-operate DAW plug-ins or stand-alone applications on Windows® or Mac® OS X based computers.

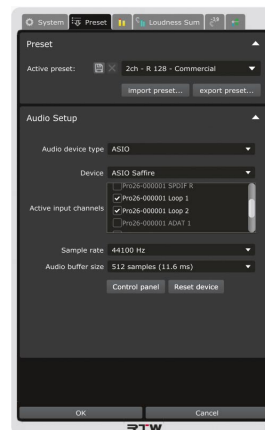
Not only major quality control is guaranteed, but also musicians, radio producers, and audio/video engineers get high-quality audio analyzer and audio processing tools to meet resulting implementation specifications required by TV and radio broadcasters.



CLC Menu



System Menu Mastering Tools

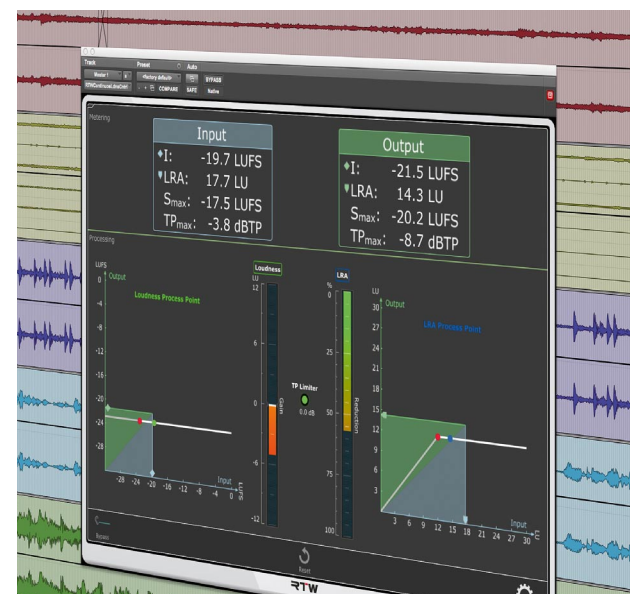
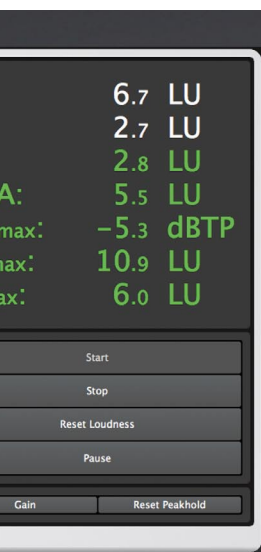


Preset/Audio Menu Loudness Tools



Loudness Sum Menu Mastering Tools

RTW Masterclass Plugins

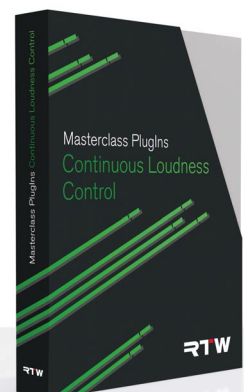
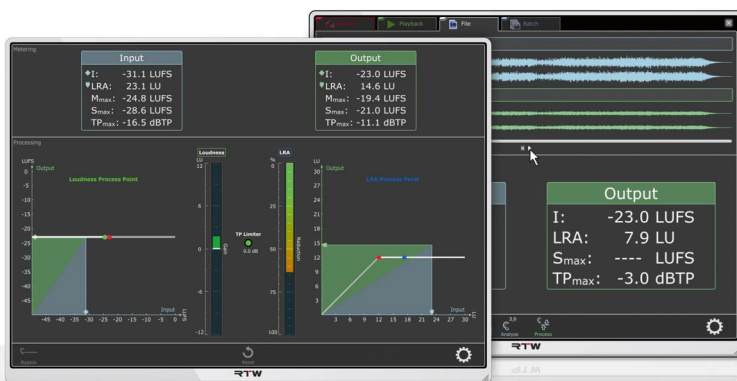


CLC – Continuous Loudness Control

Continuous Loudness Control (CLC) features a unique visualization and patented processing algorithm developed together with the IRT and allows dynamic loudness processing of unknown live audio and audio files to a given loudness value with or without changing the original Loudness Range. CLC further improves the quality of loudness processing with various enhancements like batch processing of audio files, extended audio format support, a new expert mode, Mmax and Smax limiting, report functions, and optimized presets for e. g. streaming audio. The software can be installed as DAW plug-in and stand-alone application on Windows® and Mac® OS X computers. Furthermore, an OEM hardware module including the CLC functions is available.

Features

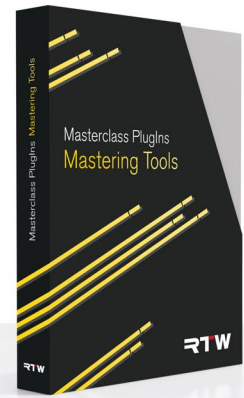
- DAW plug-in and stand-alone application
- Live audio, DAW audio, audio files, batch processing
- Extended audio format support
- Loudness acc. to all global standards
- Adjustable target for Loudness and Loudness Range
- Adjustable TP Limiter, Mmax and Smax limiting
- Expert mode
- Optimized presets for e. g. streaming audio, loudness report
- Dynamic Look-ahead Low Latency algorithm
- Adaptive Morphing technology
- All common plug-in formats for Windows® and Mac® OS X
- Multichannel (single-user/network) or Stereo licenses



RTW Masterclass Plugins

RTW Mastering Tools

Extensive analysis and display functions for mastering, metering and loudness measurements with a wide range of PPM scales, VU appearance and TruePPM measurements

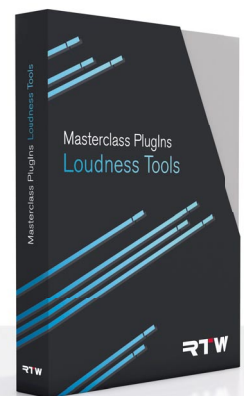


Features

- DAW plug-in and stand-alone application
- Selectable window frames or freely adjustable display
- Flexible display layout with scalable instruments
- Loudness acc. to all global standards, SPL display
- Loudness Range (LRA) with MagicLRA modes
- Bargraph and/or numerical display
- Surround Sound Analyzer, Multi and Stereo Correlator
- Audio Vectorscope
- Real time spectrum analyzer (RTA), 1/3-, 1/6-, 1/12-octave
- Function parameters for extra flexibility
- Multichannel (single-user/network) or Stereo licenses

RTW Loudness Tools

Metering and Loudness display with all relevant PPM and TruePeak measurements and scales for mono up to surround applications (8 channels max.)



Features

- DAW plug-in and stand-alone application
- Selectable window frames or freely adjustable display
- Flexible display layout with scalable instruments
- Loudness acc. to all global standards, SPL display
- Loudness Range (LRA) with MagicLRA modes
- Bargraph and/or numerical display
- Stereo Correlator
- Function parameters for extra flexibility
- Multichannel (single-user/network) or Stereo licenses

RTW USB Connect

RTW USB Connect

Complimentary software expansion for the use of the USB hybrid function of a TM3-Primus for direct access of audio signals from a DAW via USB connection.



Features

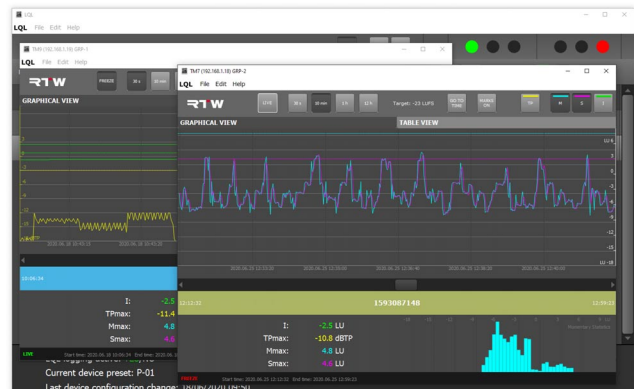
- DAW plug-in and stand-alone application
- USB-Hybrid operation for direct audio connection between DAW/audio application and TM3-Primus via USB-Connect
- Direct access of Stereo or 5.1 audio signals
- Remote control of the Start/Stop/Reset functions for Loudness instruments, the Time function of the Chart instrument, and the reference adjustment function of the RTA instrument of a directly connected TM3-Primus

LQL – Loudness Quality Logger

Logging console for collecting Loudness and TruePeak data of various TM7, TMR7, and TM9 units of the TouchMonitor series with Logging Data Server licence (SW20014) activated





Features

- Logging console for Windows® based PCs
- Timecode or realtime based collection of Loudness and TruePeak data
- Data collection via IP connection or from external USB memory devices
- Status of connected units and audio groups (main window)
- Graphical view of logged data over time of an audio group with up to four permanently captured parameters (detail window)
- Two-stage definition of limits to signal violations
- Markers for sequential analysis
- Numerical view of all measured parameters



Software Overview

RTW Masterclass Plugins (DAW plug-ins for all common formats, and stand-alone application)


	RTW Loudness Tools (Order no.: SW50100)	Loudness measurements acc. to EBU R128, ITU-R BS.1770-4/1771-1, ATSC A/85, ARIB, OP-59, AGCOM, CALM Act, SPL view, PPM/TruePeak with standard scales, Loudness Sum, Loudness Numeric, Loudness Range, Stereo-Correlator, adjustable display window, flexible display layout with scalable instruments, sampling rates up to 96 kHz
	RTW Mastering Tools (Order no.: SW50200)	Loudness measurements acc. to EBU R128, ITU-R BS.1770-4/1771-1, ATSC A/85, ARIB, OP-59, AGCOM, CALM Act, SPL view, PPM/TruePeak with extended scales and displays, Loudness Sum, Loudness Numeric, Loudness Range, Stereo-/Multi-Correlator, SSA - Surround Sound Analyzer, RTA - Real Time Analyzer, VSC - Audio Vectorscope, adjustable display window, flexible display layout with scalable instruments, sampling rates up to 96 kHz
	CLC – Continuous Loudness Control (Order no.: SW50400)	Dynamic Loudness processing in real-time of Live audio and audio files to a definable target with or without changing the original Loudness Range, Loudness acc. to EBU R128, ITU-R BS.1770-4/1771-1, ATSC A/85, ARIB, OP-59, AGCOM, CALM Act, adjustable display window, ASIO audio driver on Windows® systems required
	RTW USB Connect (SW50300, available free of charge)	Software expansion for TM3-Primus with firmware version 1-02 or higher for simultaneous metering and monitoring of audio signals, supports USB Hybrid function for direct access of audio signals via USB connection. Remote control functions for loudness measurements (Start/Stop/Reset), Chart (Time), and RTA (Ref+, Ref-), sampling rates up to 96 kHz, RTW Primus USB audio driver required on Windows® systems

System Requirements

- | | |
|---|--|
| <ul style="list-style-type: none"> Dual core processor 2.5 GHz 4 GB RAM 200 MB hard disk space iLok License Manager and iLok user account (not RTW USB Connect) | <ul style="list-style-type: none"> VST2.4, VST3, stand-alone (32/64 Bit each), AAX Native64 for Windows® 7, 8.1, 10 VST2.4, VST3, AU, AAX Native 64, stand-alone for Mac® OS X 10.11 and higher Internet connection required for activation process iLok USB Smart Key recommended (not for RTW USB Connect) |
|---|--|

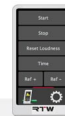
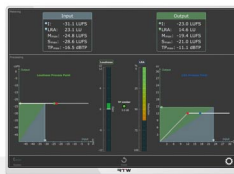


LQL – Loudness Quality Logger (for PCs with Windows® operating system)

	LQL – Loudness Quality Logger (available free of charge)	Logging console for collecting Loudness and TruePeak data of various TM7, TMR7, and TM9 units of the TouchMonitor series with Logging Data Server licence (SW20014) activated
---	--	---

System Requirements

- | | |
|--|---|
| <ul style="list-style-type: none"> PC with dual core processor 2.5 GHz 4 GB RAM 50 MB hard disk space Additional disc space recommended for storing logging data and backups | <ul style="list-style-type: none"> Microsoft® Windows® 7 with SP1 or higher (32/64 Bit) C++ runtime libraries (Download from Microsoft) Network connection TouchMonitor with Logging instrument (licence SW20014) activated and network connected |
|--|---|



© 08/2020 | Changes without notice | PISWE04

RTW US | Streamworkz LLC
 160 Varick St | 3rd Floor | New York NY 10013
 Phone: +1 646 458 1423
 ussales@rtw.com | www.rtw.com

RTW
 EYES ON YOUR AUDIO